

THE LANTERN

Junior League of Wilmington



- MEMBER ACCOMPLISHMENTS
- DIVERSITY, EQUITY, AND INCLUSION
- CATCH UP WITH THE SUSTAINERS
- COMMUNITY IMPACT FOCUS

A Year of Resilience

Our mandate has not wavered: to develop exceptionally qualified civic leaders who collaborate with community partners to identify a community's most urgent needs and address them with meaningful and relevant programs and initiatives that not only improve lives, but also change the way people think.



JUNIOR LEAGUE OF

WILMINGTON, DE

What's Inside?

| | | | | |
|---------------------------|-------------------------------|----------------------|---------------------|------------------|
| Page 2 | Page 3 | Page 4 | Page 5 | Page 6 |
| FIRST HALF OF YEAR REVIEW | DIVERSITY, EQUITY & INCLUSION | STAND UP. PERIOD. | NATIONAL PERIOD DAY | COMMUNITY IMPACT |
| Page 7 | Page 8 | Page 11 | Page 12 | Page 13 |
| 2020 PROVISIONALS | SUSTAINER CORNER | ANNUAL FUND & GRANTS | UPCOMING EVENTS | LEAGUE REMINDERS |

League Lingo

AJLI- Association of Junior Leagues International, the national-level organization dedicated to providing continuity and support, guidance, and leadership development opportunities to individual member Leagues.

501(c)(3)- A nonprofit organization has been approved by the Internal Revenue Service as a tax-exempt, charitable organization. The JLW is a 501 (c)(3) nonprofit organization.

"Going Sustaining"- "Retiring" from Active status. Sustaining Members are those who have fulfilled the Active membership requirements as defined in League policies and who continue to support the League and its community.

Sustainer Emeritus- Members are Sustaining members who have reached the age of 80 by the end of the current League year.

DC/ Member Site/ Digital Cheetah- Volunteer and Member Management software. It serves as a comprehensive portal for all things League. You can RSVP to events, find the member directory, share files, and so much more.

ODI- Organizational Development Institutes are AJLI leadership development meetings that provide JL members with mission-based training. Any JLW member is eligible to attend.

Quota- As part of your Whale requirements, you are required to donate clean, usable merchandise that can be sold at the Whale of Sale fundraiser.

Strategic Plan- Determines where the League is going over the next few years, coupled with clear evidence of what success will look like.

Annual Plan- Drills down on the Strategic Plan to plot out the steps that need to be taken...one year at a time.

Tactical Plans- Developed by each committee each year to detail strategies and tactics to achieve the the goals and objectives.

2020: A Year of Resilience

2020 was filled with uncertainty as we all struggled to fight against COVID-19. The world as we knew it was turned upside down, as work, school, and social life became virtual. Though everything around us changed, our Members' commitment to the JLW's Mission did not.

Once the Stay-At-Home guidelines were lifted in Delaware, some Members felt comfortable to volunteer, while maintaining social distance guidelines, at Food Bank of Delaware and Sunday Breakfast Mission, to name a few.

Members also supported the JLW's Stand Up. Period. initiative through volunteering and donations. General Membership Meetings, Trainings, and Socials have all be held virtually, via Zoom. Transiting to a virtual world has been tough, but our Members are still dedicating their time, energy, and resources to impact our community.



Check out our Members accomplishments so far this League's year!

TRAINING HOURS

400



VOLUNTEER HOURS

150



AWARDED 2 GRANTS



- STAND UP. PERIOD. GRANT
- TECHNOLOGY GRANT

ANNUAL FUND



As of 1/18/2021, we have raised
\$8,020

VIRTUAL SOCIALS & TRAININGS



Held at least one each month, including:

- LinkedIn
- Baking Class
- Wine Tasting
- Poverty Simulation

STAND UP. PERIOD.



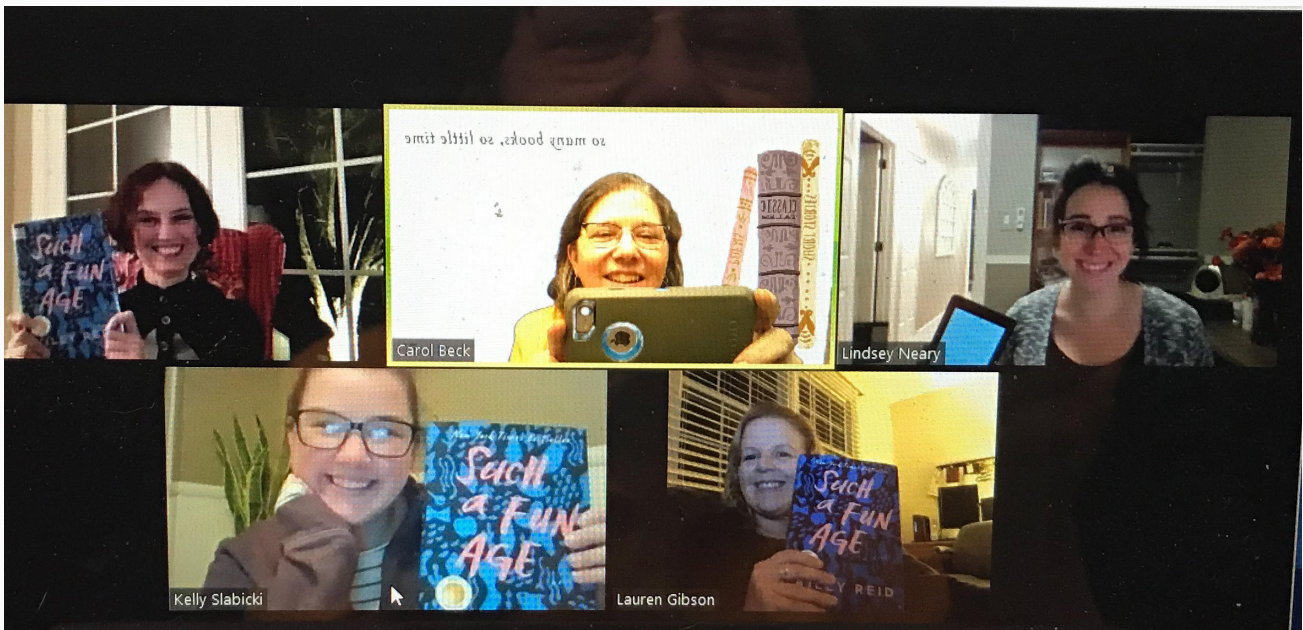
- Received our first APS donation
- Donated 29,000 supplies to 1,000 community members since Aug 2020

Diversity, Equity, and Inclusion

The JLW Diversity, Equity, and Inclusion Cross-Functional Working Group was rolled out in June 2020. Its purpose to oversee the League's efforts to embed diversity, equity, and inclusion throughout the League and serve as a bridge between the Board and Membership. The D&I Task Force laid the groundwork for this new Group, but with the help of a Member from each Council and a Board Member, the Group hope to make an even more impactful progress. Their main goal is to embed the principles of diversity, equity, and inclusion throughout League operations, policies, and culture. They developed a tactical plan for the year which includes action items for the working group and each council. If you would like to join our efforts, the Working Group is open to each and every Member!



Book Club Went Virtual



This year's past bookshelf has included the following:

- The Curious Incident of the Dog in the Night-Time by Mark Haddon
- The Shadow of the Wind by Carlos Ruíz Zafón
- Erotic stories for Punjabi Widows by Bali Kauer Jaswal
- The Nickel Boys by Colson Whitehead
- The Lager Queen of Minnesota by J. Ryan Stradaal
- The Guernsey Literary & Potato Peel Pie Society by Mary Ann Shaffer
- Such a Fun Age by Kiley Reid
- Born a Crime by Trevor Noah

*"Reading is an exercise in empathy; an exercise in walking in someone else's shoes for a while."
— Malorie Blackman*

Stand Up. Period.

The Junior League of Wilmington is striving to achieve period equity for all Delawareans through its initiative, **Stand Up. Period.** In May 2020, the JLW joined forces with the Alliance for Period Supplies (APS) in an effort to increase its support network and inventory of desperately needed period supplies.

APS is a national organization which collects, warehouses, and distributes period supplies to 75+ allied programs in over 30 states, including the JLW in Delaware. In October 2020, the JLW received its first donation from APS of an astounding 69,000 pads and 56,000 liners! The JLW will use this donation to provide the community with period supplies. Actives, Sustainers, spouses, and friends unloaded the supplies at the League headquarters in one morning! Some of these supplies have already been distributed to our community.



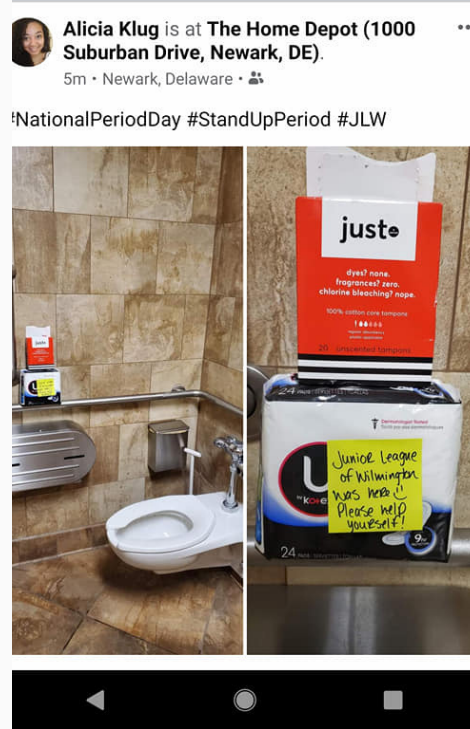
The Dining Room at Headquarters is being used as a Period Supply Room since meetings are virtual!



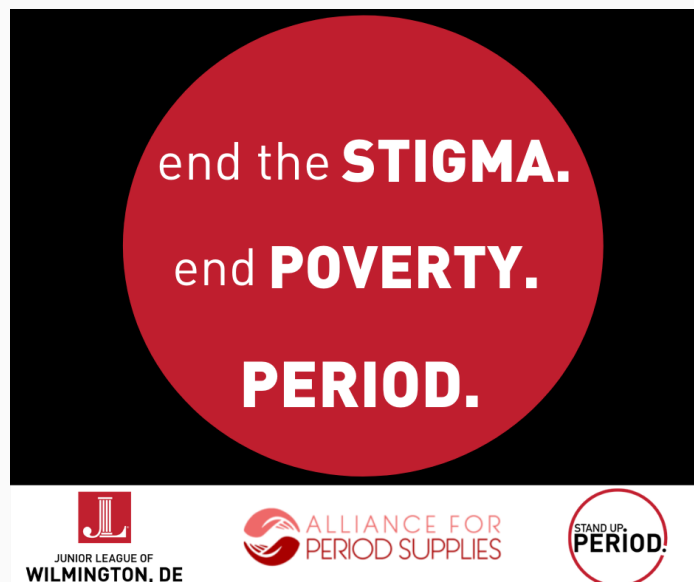
“This was my first CI event as a JLW member. I found it very rewarding to help unpack and move hundreds of boxes of period supplies into the League House, knowing they are going to be put to great use in our community.” - Lindsey Neary

National Period Day

On October 10, the Junior League of Wilmington launched a social media campaign that brought awareness to period equity and period poverty. JLW members also took to social media to explain what period equity meant to them through video which was posted on the JLW Facebook and Instagram pages. Some Members also placed period supplies in public restrooms!



The Communications Committee has worked to continue to highlight menstrual hygiene and period poverty through its social media posts. They urge all Members to continue to share our period awareness posts as it can only help bring more awareness to the issue and our Stand Up. Period. initiative.



Community Impact

Since December 2020, the JLW has donated period supplies to Meet Me at the Well's December drive, the Reach Warehouse, St. Stephen's Lutheran Community Services food pantry, The Hope Center, and individuals needing supplies. In addition to all the work done for Stand Up. Period. the CI Committee brought back volunteer opportunities called Done In A Day (DIAD). Members had the chance to give back at the Food Bank of DE, Planting to Feed, Harvest Fest, PAL Center, the Sunday Breakfast Mission, and more. Check out the Member calendar for the next volunteer opportunity!



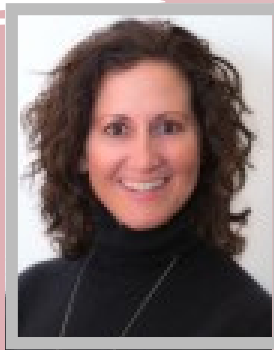
2020 Provisionals

Congratulations to the Fall 2020 Provisional Class!

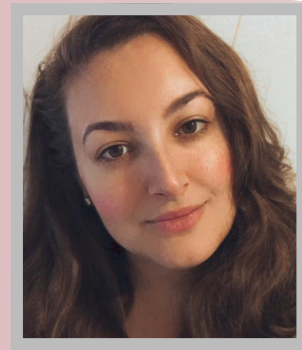
Though the pandemic changed their provisional class format, these new Members hit the ground running as they were placed in committees after their first provisional meeting. Provisionals served on the following committees as they learned more about the JLW's History and Mission: Communications, Community Impact, Women's Leadership Summit and Public Policy & Advocacy Committees. Welcome to the League! They officially become Active Members in January 2021.



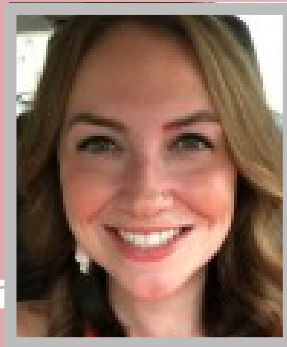
LaVante Dorsey



Julie Eckard



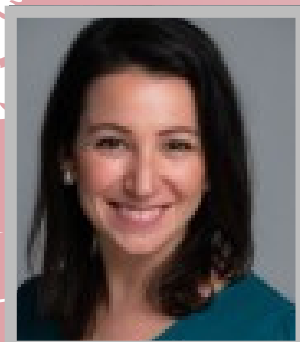
Merrie Goodlander



Colleen Heyel



Catherine Lampi



Lindsey Neary



Meredith Sobus



Janice Viamontie

Sustainer Corner

Sinking Springs on Bristoll Planation

On October 13, Fresh air and the palette of fall greeted thirteen sustainers as they visited the bucolic setting of Sinking Springs on Bristoll Plantation in Elkton, Maryland. Set on 130 rural acres, the property includes a restored 17th century log home, a 442-year-old sycamore tree, colorful flower and herb gardens, a Revolutionary War-era cemetery, and beautiful views.

The hostess, Ann Stubbs, provided a history of the property, that has been in the family for several generations, as they worked their way on foot to the plantation home. At the home, the peach-mint tea flowed while they were served a delicious lunch which included edible flowers, vegetables, and herbs from the garden. After lunch, Ann provided fresh-cut fragrant herbs for them to make sachets. There was no shortage of lively conversation and laughter as the sustainers enjoyed their reunion.



Sustainer Corner

JLW House Gardeners: Sowing the Seeds of Community

The Junior League Headquarters is a 250-year-old stone colonial surrounded by an array of flowers, plants, and trees that are most likely overlooked by Members, but some pay tribute to past Members and are cared for by a very special group.

The inviting Junior League Red front door is set between liriopie on both sides, an Okame Cherry Tree planted in honor of past-President and Sustainer Barbara DuPont and her husband Irene, and a Hawthorn tree whose limbs prefer growing towards the house. Along 18th Street lives the holly that the Delaware Horticulture Society has trimmed for their holiday wreaths in exchange for help clearing the limbs from the JLW grounds. The back entrance of the house, frequent



by Members has a Sarcococca plant resting below the memorial plaque dedicated to past-President, Sheila Kern, chosen especially for that exact spot.

About ten years ago, Sustainers Mary Kay Haden and Diane Lawson were discussing Diane's role as House and Garden Chair. Diane had no committee, and on top of supporting the upkeep of the house, she was asked to care for the grounds. In 2006, the Junior League held a Cornerstone Campaign which raised over \$750,000 for building renovations, an archives project, and a maintenance endowment. During these renovations some landscaping design and planting did occur. However, Diane needed to not only weed and prune to ensure the newly installed plants would thrive, but she also needed to learn about the care of the plants and the correct tools and timing for care. She needed to clean the gutters and pick-up litter, remove plants that were not surviving, choose new plants that would do well in the ecosystem of the grounds, and complete all of the other work that comes with cultivating an outdoor space. Additionally, she needed to complete these tasks on a tight budget. Thankfully, Mary Kay had an interest in gardening and in the spirit of volunteerism, joined up with Diane. Later, Lisa Simon, whose son was a gardener, also joined them.

Then they were able to garner support from Sustainers to fund plants and projects, and found others to join them such as Mary Warburton, Jeanie Hayes, Susan Stafford, Annie Sifton, Nancy Boden, Karen Henderson, Louise Phippen, and Anne Waldburger.

Sustainer Corner

JLW House Gardeners Cont.

Spouses grew to love the house during events and holiday parties, and have been willing participants in pulling up trees, climbing ladders, and doing other heavy lifting. The gardening team partnered with Master Gardener Tom Maddux to train Members in plant care and to make choices about landscaping. Over the past ten years community partnerships have shaped the way the grounds at headquarters look and helped the grounds thrive.

These days, the Junior League Gardeners meet weekly at Headquarters. They pick up litter along 18th Street, 19th Street, and Market Street to support the beautification of Old Brandywine Village. They use donated and hand-me-down tools to keep up with the grounds. They know which trees require an annual treatment for an invasive insect, when to perform pre-emergent herbicide application, and the plants which benefit from selective pruning, a strategy that leaves the plant healthier and more natural looking than traditional pruning.

Many of the Gardeners have had a lifelong love of plants and gardens, some have taken gardening classes at University of Delaware and Longwood Gardens, but much of what they do has been learned on the job through trial and error. The routine they have and the community spirit they invoke with this work allows them to not only keep the Junior League grounds healthy, but also put their energy into other community projects.

Recently, the Gardeners noted that the grounds of 1803 and 1805 North Market Street were extremely overrun with weeds. These historic homes are owned by the Wilmington Senior Center. Since noticing the overrun yards, the Gardeners started cleaning up the space and are regularly caring for those yards, as well as the grounds at Headquarters.



This dedicated and enthusiastic group of volunteers encourages any JL Member who is interested to join them Tuesday and Thursday mornings - no need to send a message, just show up (children are welcome!). The work is rewarding, good for the body and soul, and is truly a community effort that is synonymous with The JLW.

Annual Fund & Grants

The Annual Fund & Grants Committee has been hard at work creating opportunities for the League to raise money for its focus area and community programs. As of January 2021, the League has raised \$8,020 through the Annual Fund campaign, as well as funds for our general funds.

Some notable 2020 fundraiser events and their contribution:

- Frank's Wine Event, raised \$750
- Giving Tuesday, raised over \$1,000
- Holiday Market, raised over \$350



The Junior League of Wilmington would like to thank the **Crestlea Foundation** for their generosity! We were awarded a grant for our Stand Up. Period initiative. The CI committee is already planning on how to use the funds.

The Junior League of Wilmington would like to thank the **Crystal Trust** for their generosity! We were awarded a grant to upgrade our technology! It's time to upgrade our hardware and software. Stay tuned for more details!

2021 Women's Leadership Summit

Be The Movement!

Feel empowered and #BeTheMovement as you listen to inspiring speakers during the half-day virtual event! New this year: speed networking!

Tickets are still on sale!

Speakers

Cindy Bo, MBA

Leadership Lessons Learned at Age 5 From My Immigrant Parents

Jennifer Cohan

Overcoming & Thriving Leadership

Dr. Guillermina Gonzalez

Less Talk More Action – Race, Diversity, & Inclusion

Majority Leader Valerie Longhurst and State Senator Kyle Evans Gay

Period Equity in Delaware

Breakout Rooms

Navigating Change with Grace: Monica A. Coleman

Learning to Cultivate Gratitude: Kelsey Styles

Kitchen Tour

Save the date for Kitchen Tour **Reimagined!** This self-guided virtual tour will showcase some of the area's finest kitchens. You will also have the option to attend virtual cooking classes from fabulous local chefs.

Cooking classes will take place in a different kitchen each week during the month of April. The Chefs will prepare a meal or dessert in one of our featured kitchens in a live virtual format. Ingredients will be local and accessible and will be shared with you ahead of time.



The Junior League of Wilmington

KITCHEN TOUR

League Reminders

Go to smile.amazon.com and select “Junior League Of Wilmington, Inc.” as your charity. Amazon will donate .5% of the price of your purchases to JLW!
It’s that easy!



Let’s go for 100% Annual Fund Participation this year!
* Annual Fund donations are fully tax-deductible as allowed by law*



100% of the JLW Board of Directors have donated to this year's Annual Fund!

Join Us! We have an exciting League year ahead, and we appreciate your support of our Mission and goals.

FOLLOW US ON SOCIAL MEDIA!



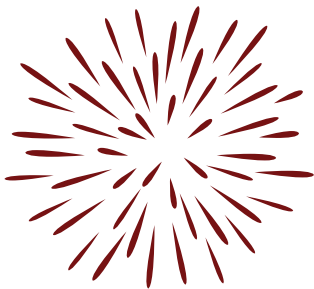
Junior League of Wilmington



jlwilmingtonde

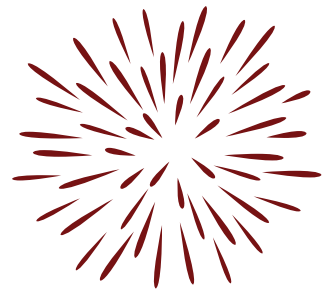


Junior League of Wilmington, DE



Go Ahead Brag a Bit! We Welcome It!

Have something to brag about or know someone who does? Log into your Member Homepage and submit a brag!



Dues for the 2021-22 League year are due April 1. Payments can be made by check or online on the Member website. If you need assistance logging in, please contact headquarters or email jlw@jlwilmington.org.

Message from the President

Welcome to the Lantern!

Our Members are what make the JLW such an amazing organization and I want to say thank you to each and every one of you. Your hard work and passion continue to help build a better community and I am honored to serve with each of you! Thank you for choosing the JLW to share your time, talents, and resources. Thank you for your commitment to our organization and our community.

This year is like none other, and like many other nonprofits, the pandemic has affected the JLW tremendously. However, the JLW and our Members are resilient, and despite all the obstacles of 2020, we have stayed true to our Mission. We will continue to work hard for our community and continue to fight towards period equity! We have been able to virtually hold trainings every month, as well as a variety of social events and although so much has changed in such a short time, we have continued to find new ways to harness the power of voluntarism. We were able to re-imagine the Kitchen Tour and the Women's Leadership Summit and they both have gone virtual. I cannot be more excited to tour fancy kitchens from my couch and get inspired by the WLS speakers!

We are grateful for the many sponsors, donors, community partners, family, and friends who have continued to support us during this challenging time. I also want to take a minute to say thank you to Kathy Doolin, she is the glue that keeps us together, year after year. Kathy, thank you for your dedication to the JLW!

I hope you have enjoyed viewing some highlights of the first half of the 2020-21 League year. I have been so encouraged by what the JLW have been able to accomplish in the first half of this year and I can't wait to see what we accomplish in the second half.

We are all in this together!

Jessica Chapple, JLW President



2020-21 Slate of Leadership

Board of Directors

President – Jessica Chapple
President-Elect – Melissa Marlin
Treasurer – Kristen Messina
Assistant Treasurer – Krista Kondravy
Secretary – Kinsey Lenehan
VP Communications & Administration – Ciara Seal
VP Community Programs – Erin Williams
VP Membership – Heidi Shoulders
Sustainer Director – Pam Cornforth

Membership Council

Nominating Chair – Lauren Fortunato
Member Development Chair – Lauren Gibson

Communications and Administration Council

Communications Chair – Taylor Davis

Community Programs Council

Community Impact Chairs – Megan Pettyjohn & Dorothy Prior
Public Policy & Advocacy Chair – Lizzie Zubaca
Women's Leadership Chair - Emily Mathisen

Ways and Means Council

Annual Fund & Grants Chair – Catherine Anzalone
Whale of a Sale Chairs – Kristin Moaike, Meredith Erskine, Steph Graev
Kitchen Tour Chair - Tara Wheeler



JUNIOR LEAGUE OF
WILMINGTON, DE

1801 N. Market Street
Wilmington, Delaware 19802

Non-Profit Organization
U.S. POSTAGE
PAID
Wilmington, Delaware
PERMIT NO. 227

**EVERY JUNIOR LEAGUE STORY STARTS WITH A WOMAN, READY TO DISRUPT
CONVENTION, AND BUILD A BETTER COMMUNITY. ARE YOU THAT WOMAN?**

The Junior League of Wilmington is actively seeking women who possess an interest in voluntarism, a commitment to community service, and an interest in developing their potential for voluntary community participation. The Junior League welcomes all women who value our mission. We are committed to an inclusive environment.

For more information, visit our website: jlwilmington.org