

FALL 2015

# THE LANTERN

THE JUNIOR LEAGUE OF WILMINGTON, DE

VOLUME 28 ISSUE 1

*A Unique Partnership with the  
Wilmington Senior Center*

*JLW Members Get Physical*

*What's Cooking? The 11th  
Kitchen Tour Coming April 9!*

*Annual Fund Kicks Off*

*Sustainers and the USO*

## *Stylin' in Red to Celebrate 97 Years of the JLW*



Join us for **The 95th Annual Perfect Gift**,  
Delaware's largest and oldest charitable gift show.



**Dozens of unique shops • One great way to give  
20% of all purchases benefit Delaware charities**

- Exciting new location **The Arsht Hall** in Wilmington
- The Perfect Gift will now have convenient weekend shopping hours on **Saturday 11/14** and **Sunday 11/15**
- Over **40 unique exhibitors** with gifts for everyone on your holiday shopping list

Visit **[www.ChristmasShopFoundation.org](http://www.ChristmasShopFoundation.org)** for more details



Saturday, November 14, 10 am to 5:30 pm • Sunday, November 15, 9:30 am to 4 pm  
The Arsht Hall • 2700 Pennsylvania Avenue • Wilmington, DE 19806



## President's Message



*Kristen McMullen, President*

Modeled after Junior Leagues there are several JSL's around the country. I served as their provisional chair, communications chair, service chair and then as president of the JSL.

A job change brought my husband to Delaware and I took on my current role as the director of alumni relations for the veterinary school at Penn – and yes, it is as fun as it sounds being around animals every day! My transfer to the Wilmington League was the first thing I did when we moved here and I gladly served on the Communications Committee followed by chairing that Committee the following year. I remember distinctly the phone call I got from Nikki Hudak who was organizing nominating interviews at the time. I had filled out the nominating form and basically checked off everything on the form, I was happy to serve in whatever role they need me to. And that was when I realized that the experience you get throughout your entire League career is respected. I was the newbie in the JLW but I was bringing with me years of League and other volunteer and professional leadership experience. I wasn't seeing it that way but they did and I'm so happy for that.

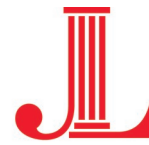
I am very proud and humbled to be serving as the president of the Junior League of Wilmington. This League is 97 years strong and that is saying something. I hope that I can be part of continuing to help our League grow, prosper, and be a positive influence for our members and our community. I look forward to taking this journey with all of you!

Very best wishes,

Kristen McMullen

First and foremost I want to introduce myself! Years ago, at the prodding of the Administrative Assistant in my office at St. Joseph Medical Center in Stamford, Connecticut, I hesitantly attended a Junior League recruitment coffee. To be honest, I really went to make Carolyn happy. I really didn't think this group would be for me. Then I met the ladies and heard about the Enchanted Forest fundraiser and how they had started the majority of well-known non-profits in the area including the Volunteer Center for which I sat on their board! I had no idea what the League did or had done. I was hooked! I joined the League in Greenwich, Connecticut, my hometown followed by serving as Done in a Day Chair and Provisional Chair when we took the program to two classes a year.

Having met my now husband at the time, we ventured off to Raleigh where I worked at Duke University doing career services with executive MBA students and I transferred to the very large Raleigh League where I served on the Communications Committee. When we relocated to Summerville, South Carolina I became the director of communications & alumni relations at a private K-12 school. I found my way to the Junior Service League of Summerville.



## JUNIOR LEAGUE OF WILMINGTON, DE

*Women building better communities*

### Board of Directors

President | Kristen McMullen  
President-Elect | Steph Graev  
Secretary | Christi Miller  
Treasurer | Kesha Clarke  
Assistant Treasurer | Melissa McKenry  
VP Community Programs | Michelle Giblin  
VP Membership | Heather Maginnis  
Nominating Chair | Stephanie Cory  
Sustaining Chair | Sandra Borrer

### Membership Council

Provisional Co-Chairs  
Hayley Williams and Katie Van Druff  
Member Advisory Chair | Laura Bianco  
Nominating Chair | Stephanie Cory  
Nominating Vice Chair | Noreena Lewis  
Recruiting Chair | Nikki Hudak

### Communications and Administration Council

Communications Chair | Angela Caputo

### Community Programs Council

Community Impact Chair | Stephanie Smith

### Ways and Means Council

Kitchen Tour Chair | Angela Gustavsen  
Fund Development Co-Chairs:  
Amanda Follett and Katie Litchfield

*The Junior League of Wilmington is an organization of women committed to promoting voluntarism, developing the potential of women, and improving the community through the effective action and leadership of trained volunteers. Its purpose is exclusively educational and charitable.*

Junior League of Wilmington, DE  
1801 N. Market St.  
Wilmington, DE 19802  
302-652-0544 Office  
302-652-0826 Fax  
[www.jlwilmington.org](http://www.jlwilmington.org)

Editor: Angela Caputo

# JLW Members take on Mentoring Middle School Aged Granddaughters: A Unique Partnership with the Wilmington Senior Center

There is a growing phenomenon in this nation in which grandparents have become the primary caregivers of their grandchildren for a myriad of socio-economic reasons including imprisonment, drug abuse, alcoholism, and/or abandonment by biological parents. According to "GrandFacts" a publication of The American Association of Retired Persons (AARP), here is how the situation looks for the state of Delaware.

### The Children

- 19,001 of children under the age of 18 live with grandparents who are the householders (9.27% of the children in the state) (U.S. 2010 Census)
- 8,182 children live in homes with grandparent householders where grandparents are responsible for them.
- Of these children, 3,058 have no parents present in the home.\*

### The Grandparents

- 7,551 grandparents are the householders and are responsible for their grandchildren living with them.
- Of these: 54% of the grandparents are White and not Hispanic, 36% are Black/African American, 1% are Asian, and 7% are Hispanic/Latino, and may be of any race.
- 40% have no parents of the children present in the home.
- 67% are under age 60. 12% live in poverty.\*\*  
\*Comparable data are not currently available for homes where other relatives are the householders.  
\*\*100% of poverty level.

*Data not specifically cited are taken from the U.S. Census Bureau 2005 -2009 American Community Survey 5-Year Estimates, Detailed Table B09006 and Subject Tables S1001 and S1002. Additional data on related topics and sub-state areas can be found on the Census Bureau website at <http://factfinder.census.gov>*

The Junior League of Wilmington recently focused its community impact on improving the lives of girls between the ages of 12-18 in Greater Wilmington and the Community Impact Committee (CIC) saw a unique opportunity to help address some of the challenges faced by middle school aged girls being raised by grandparents. Challenges include but aren't limited to

loss of biological parent relationships, lowered self-esteem, and lost trust, to name just a few.

In partnership with the Wilmington Senior Center (WSC), JLW will launch a new "group mentoring program" in winter 2015. Although WSC's mission is to provide service and meet the needs of seniors, there are a lot of grandmothers at WSC who are raising their middle school aged granddaughters. The Wilmington Senior Center has identified the need for middle school aged girls being raised by their grandmothers to be engaged with volunteers. "The girls definitely need personal attention from women outside their families who can help them build self-esteem, work on homework, and have a safe relationship in which to talk about the things they're most concerned about: feeling in control of their lives and developing good relationships" noted the WSC Executive Director.

The JLW will meet monthly with the girls for joint activities and projects rather than traditional mentoring. By working side by side, conversations will occur naturally and relationships will develop without being "forced." Planned activities include watching movies followed by discussion, jewelry-making, knitting, yoga classes, crafting, gardening and joint volunteer activities. One of our ultimate goals is to have the participants put together and host a "healthy hour" at the WSC for the other grandkids during spring break. A healthy hour is several different activities/projects at different tables around a room. Kids go from table to table to learn about healthy eating. The activities can be anything from a game where you spin the wheel and have to try whatever fruit or vegetable it lands on, cutting out pictures of food to glue on a plate to create a balanced meal, making your own trail mix, or "sugar shock" where kids measure the number of grams of sugar in their favorite drinks.

What JLW wants to provide is a monthly meet up for these girls and create a fun environment where they feel safe. It's JLW's hope that by creating this environment it will allow the girls to build self-confidence and learn. While the idea is to provide a form of mentorship, rather than one-on-one mentoring, we will be engaged in small group activities. Our focus will be on providing personal attention to the girls and building good relationships with them.

JLW President, Kristen McMullen stated, "Although the Wilmington Senior Center may not seem like a logical fit for our focus on improving the lives of girls age 12-18, it fits perfectly. The grandmothers at the Senior Center are most often single grandparents raising their grandchildren and these girls are in need of additional role models to help them become more confident. It is the Junior League's hope that we will be successful in achieving that and much more."





## Community Impact Collections for 2015-2016

As part of our Community Impact Projects, the Junior of Wilmington is collecting items to help girls in our community. These items will be donated to two of the organizations that we are working with this year, DAPI and Bayard House. Both of these organizations serve pregnant teens, as well as teen moms. Please bring feminine hygiene products, baby wipes, and diapers to the monthly GMM. Items can also be dropped off at headquarters Tuesday and Thursday mornings.

### The Ladies of the JLW Get Physical in Bonsall Park

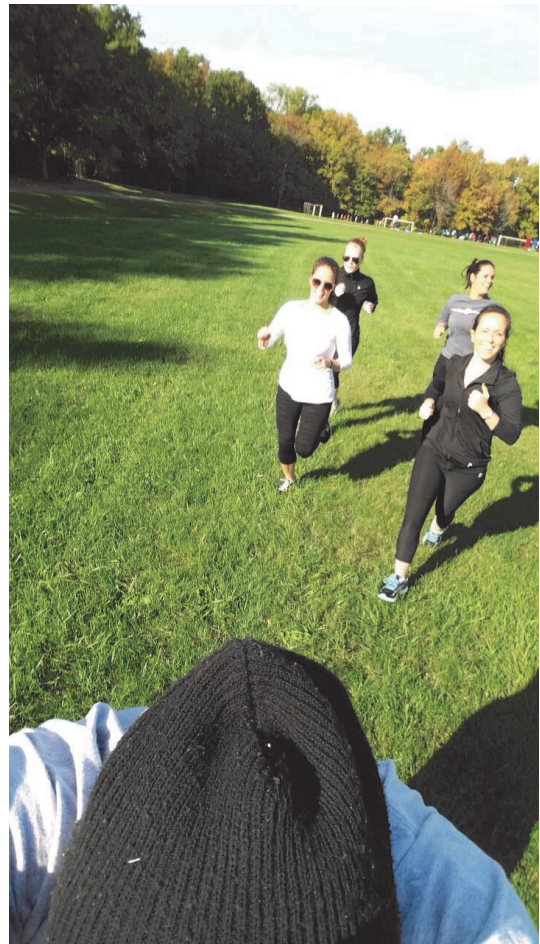
by Afiya J. Watkins

On Sunday, October 11<sup>th</sup>, JLW hosted a fitness event in Wilmington's Bonsall Park under the direction of Art Fitness owner/trainer Alisa Rose and fitness trainer Byshi Watson. In attendance were JLW members Nikki Hudak, Alex Stone, Lindsay Lancaster, Stephanie Graev and Coral Benedict. Colleen Clancey and Sara Chandler, who are both prospective members, also participated in the event.

The weather was cool and brisk, but otherwise sunny and gorgeous, so there was much activity in the park: visitors jogging, powerwalking and there was even a softball game underway in an adjacent field. All of this created the perfect backdrop for a vigorous workout, and the lovely ladies of JLW didn't disappoint. Trainer, Alisa, who has been in the health and fitness field for over a decade, and her assistant, Byshi, led the group through several sets of lunges, body resistance exercises, sprints and repetitive cardio. Although the workout was intense, the ladies still took advantage of the team-building opportunity that was presented and even had fun. "I had a great time. It was the perfect combination of team-building and physical exercise," lamented Nikki Hudak, the event's coordinator.



After exercising, the ladies refueled with fruit, coffee and bagels while chatting about upcoming League events...and life. A great time was had by all!



For more information about Art Fitness contact:  
Alisa Rose, Owner/Trainer  
2807 Concord Pike  
Wilmington, DE 19803  
(302) 477-0123  
<http://artfitnesstraining.com/alisa-rose/>



# Lead With Your Strengths

The AJLI Fall Leadership Conference

by Stephanie Graev



some of the best, as well as having the opportunity to tour one of the greatest cities in the world, is truly an experience to remember and share with my fellow League members.

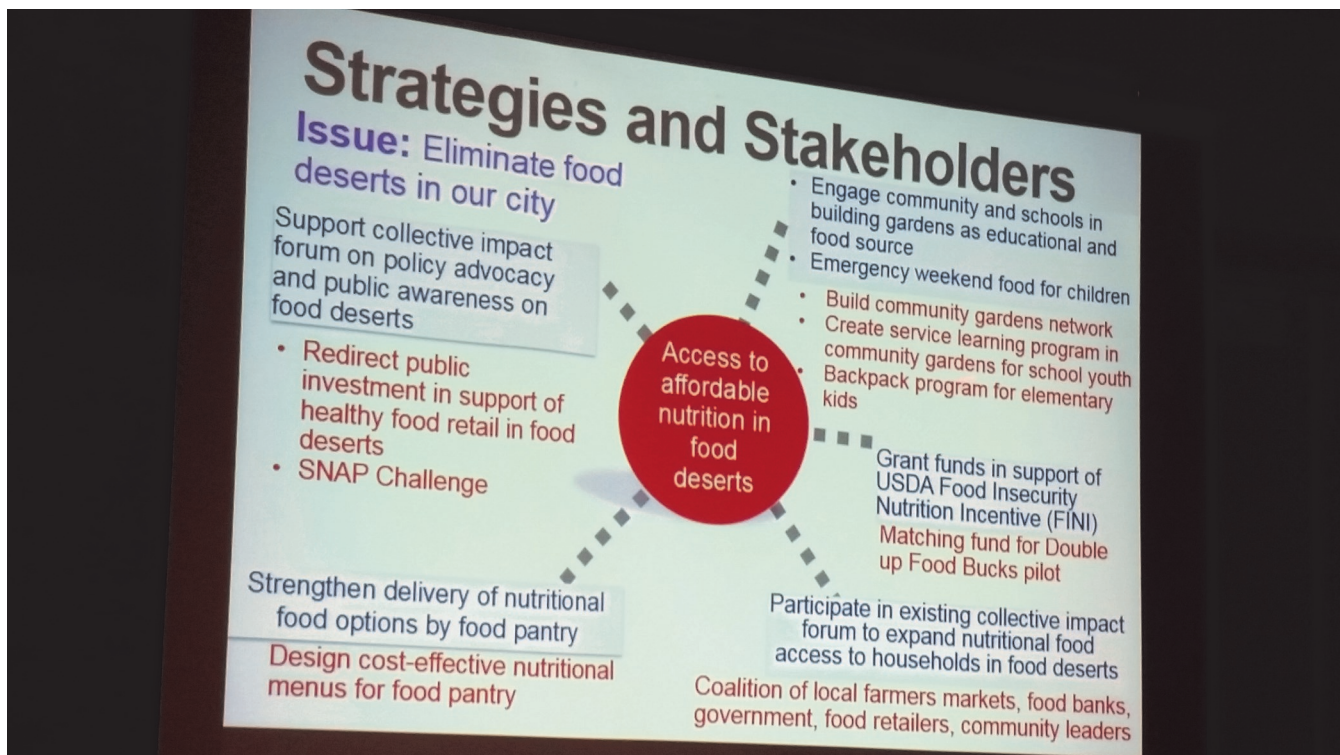
Attending an AJLI training is an amazing opportunity to learn and bring things back to the Junior League of Wilmington. One of the most important sessions Kristen and I attended was a dialogue featuring League Presidents from The Junior League of Saint Louis, The Junior League of Baltimore, and The Junior League of Charleston, SC, whose cities and Leagues were impacted by racially motivated violence and by violent aftermaths to police action in low income, African American neighborhoods. We also attended sessions on using the logic model to develop, communicate and evaluate your community programs, how to measure the Leagues' impact, and successful annual giving campaigns, to name a few. The amazing training offered at AJLI conferences is something both Kristen and I are excited to share with the League and implement to make the Junior League of Wilmington a stronger and more impactful organization in the greater Wilmington area community.



**C**ulture, food, music, fun. When you think about traveling to New Orleans, those are the words most people probably think of. But when traveling to New Orleans for the Association of Junior Leagues International Fall Conference, the words that came to mind were training, leadership, women, friendship and fun. From September 17 to September 20, President Kristen McMullen and I had the pleasure of representing the Junior League of Wilmington by attending AJLI's Fall Leadership Conference. To be amongst League leaders from 292 Junior Leagues from around the world, receiving training from



In addition to training, we got to have a little fun too! Our first day in NOLA, we were able to visit famous restaurants like Mother's to sample a po boy, Café Du Monde for beignets and café au lait, and listen to live jazz music from renown musician Delfeayo Marsalis. We had oysters, crawfish and drinks on Bourbon Street. To end the weekend, we got a tour of Mardi Gras World, which is one of twelve locations where they store floats for Mardi Gras. New Orleans is an amazing place with amazing culture, amazing food, and the home to an amazing group of women leaders that represent Junior Leagues from around the world.



**Take advantage of AJLI Training by visiting the AJLI website today**



# *What's Cooking? The 11<sup>th</sup> Heart of the Home<sup>®</sup> Kitchen Tour!*

While many of us were hitting the beach this summer, the 2016 **Heart of the Home<sup>®</sup> Kitchen Tour** Committee was hard at work planning an “island vacation” of a different sort.

The committee has been fielding kitchen submissions from top local designers, soliciting sponsors for the Tour as well as program advertisers and food demonstrators, and crafting its marketing materials and strategy since the League year began. To maximize attendance – and therefore the potential impact of the Tour – the committee is planning to really showcase both the dream kitchens that make up the Tour and the food samples that make it extra delicious for attendees. The aim is to create an incredible day of culinary inspiration for Tour-goers.

“We hope attendees will feel pampered and transported by the Tour, like they are on a mini-vacation,” said Kitchen Tour Chair Angela Gustavsen.

“There is something for everyone on the Tour. Whether someone is drawn by the opportunity for a peek at amazing, inspiring kitchens, or is simply there for the fabulous food, they will walk away satisfied with our offerings this year,” said Gustavsen.

Susie Mathews, Kitchen Tour Vice Chair in charge of house visits, has said she is impressed by the range of kitchen styles that designers have submitted so far.

And Kate Mowery, the Vice Chair who is overseeing the food demonstrations aspect of the Tour, reports that several popular local restaurants have already signed on to share scrumptious offerings at the Tour. Mouths will be watering, for sure.

In addition to emphasizing both aspects of the Kitchen Tour, the Committee plans to try to extend its reach with social media and other advertising and marketing initiatives, led by Vice Chair Christine Zwick and her Print & Marketing subcommittee.

If you know a designer, restaurant, or other local business who would be a great fit to participate in or sponsor the Tour, please contact Gustavsen at [angelasalvucci@hotmail.com](mailto:angelasalvucci@hotmail.com) or (617) 797-9994.



# *an island vacation*



Saturday, April 9, 2016

Spectacular Kitchens

9:30 a.m. - 4:30 p.m.

## HEART OF THE HOME® KITCHEN TOUR

Gourmet Food

[www.heartofthehometour.com](http://www.heartofthehometour.com)

Like us on [Facebook.com/heartofthehomekitchentour](https://www.facebook.com/heartofthehomekitchentour)







Go to [smile.amazon.com](https://smile.amazon.com) and select "Junior League Of Wilmington Inc." as your charity.

Amazon will donate .5% of the price of your purchases to JLW! It's that easy!

Shop on Amazon using the link on the JLW home page and an additional portion of your sale will benefit JLW.

**Do your holiday shopping and benefit the League at the same time.**

**Please share with your friends and family!**

# Annual Fund Kicks Off!

**Let's go for 100% Annual Fund Participation this year!**

\* Annual Fund donations are fully tax-deductible as allowed by law\*

**100% of the JLW Board of Directors has pledged to the Annual Fund! Join Us!**

**We have an exciting League year ahead, and we appreciate your support of our mission and goals.**

**Online Donations: [jlwilmington.org/](https://jlwilmington.org/)  
By Mail: Junior League, 1801 N. Market St., Wilmington, DE 19802**

## Your generous gift to this year's Annual Fund will support:

- ❖ **DAPI:** JLW is continuing to revitalize the facilities of the Delaware Adolescent Program, Inc. to help pregnant teens continue their education and receive pre-natal care [DAPI.org](https://DAPI.org)
- ❖ **Erin's Law:** JLW is promoting the passage of a law in Delaware requiring public schools to implement age-appropriate education on the prevention and recognition of child sexual abuse [ErinsLaw.org](https://ErinsLaw.org)
- ❖ **Workshops at Bayard House and Delaware Center for Justice (DCJ):** JLW is providing life skill and career readiness workshops to homeless or transitional pregnant teens and young women on various topics, including writing an effective resume, dressing for success, workplace attitude, and conducting a successful interview. [Bayard House \(ccwilm.org/Bayard-House\)](https://BayardHouse.org)
- ❖ **Wilmington Senior Center Mentorships:** JLW will provide activities and mentoring to young girls of families served by the Wilmington Senior Center.
- ❖ **JLW Leadership Academy and Women's Leadership Seminar:** JLW Members, serving as Leadership Development Consultants (LDCs), will share their knowledge in order to help other members develop and grow as leaders. LDCs will provide training in both formal and informal sessions, to committees or one-on-one. Topics could include marketing, sales, fundraising, career services, environmental science, law, and media relations.





# USO Delaware & The Junior League of Wilmington

The JLW traditionally has supported war efforts, starting with rolling bandages for World War I. The JLW was a strong supporter of the USO during World War II. In 1945, USO presented their *Meritorious Award* to the JLW for the League's war efforts

## FAST FORWARD TO 2015

On Saturday, September 26, forty-five JLW Sustainers and friends gathered to honor USO Delaware and celebrate more than seventy years of history between the two organizations. We are proud to renew our relationship with USO. Sponsored by the Sustainer Committee, the event was held at the home of Tom and Marianne Cameron. Outdoors, guests enjoyed delicious food and drink. Indoors, guests took a trip down memory lane and viewed JLW archival materials from the 1940s, including a copy of the 1945 Meritorious Award presented to the JLW for its efforts.

USO Delaware programs manager, Yolanda Bottorf, addressed the group and spoke of her deep appreciation for our support. Roberts and Allison Brokaw provided a special musical treat - patriotic songs that made our feet tap and our hearts smile.

There was no cost to attend this event. Guests were asked to bring an item from the USO Delaware Community Center wish list. Located at the Dover Air

Force Base, the center is open seven days a week and serves all branches of the military and their families. Visitors come from the region and all over the world, and include troops awaiting deployment as well as families of the fallen awaiting dignified transfer of their loved one. USO Delaware offers a touch of home for those who sacrifice so much. USO is a nonprofit organization, not supported by any government funds, and run by volunteers.

Sustainers express a special thank you to Active member Noreena Lewis who coordinated an item drive at the Actives' September general meeting. In addition to these generous donations, guests, and those unable to attend the party, donated a total of **\$565** to USO! Following is a grand total of wish list donations.

**Hot chocolate - 558 packets**

**Coffee - 544 K-cups**

**Oatmeal - 476 packets**

**Hot/cold cups - 760**

**Napkins - 3,870**

Would you like a tour of the USO Delaware Center? Call Yolanda Bottorf, 1-302-677-2491. [www.usodelaware.org](http://www.usodelaware.org)



## Welcome Fall Provisionals!



**Pictured:**

(Top Row from Left to Right) Amanda Piccioni, Laura van der Post, Tara Wheeler, Sarika Jagtiani, Demelza Davies, Cat DeFelice, Michelle Ray, (Bottom Row from Left to Right) Lexie Massey, Rachel Becker, Emily Strasburg, Gillian Fruth, Lindsay Gullebeau

## Join The Junior League of Wilmington!



**JUNIOR LEAGUE OF WILMINGTON, DE**

*Women building better communities*

### **INTERESTED IN MAKING A DIFFERENCE?**

Consider joining the largest women's volunteer organization in the country.

### **POSITIVELY IMPACT YOUR COMMUNITY AND YOUR LIFE!**

We are a group of highly-motivated and productive women who have an interest in giving back to our community. Women are in all stages of life from starting a career to retirement. Gain valuable skills and friendships while helping give back!

To learn more about joining the Junior League, please visit our website today.

**[www.jlwilmington.org](http://www.jlwilmington.org)**





# Stay tuned for the JLW Golf Outing Fundraiser – Summer 2016!



Any Questions for Fund Development?  
Contact our JLW Fund Development Co-Chairs,  
Katie Litchfield [klitchfield123@gmail.com](mailto:klitchfield123@gmail.com)  
Amanda Follett [amanda.n.follett@gmail.com](mailto:amanda.n.follett@gmail.com)





*If there's any delay, it's you we pay!.*

**Wilmington**  
**Dover**  
**Delaware Beaches**

**Nights.**  
**Weekends.**  
**Anytime.**  
**No Extra Charge.**



Call **302.998.1966** or visit  
[www.benfranklinplumbing.com](http://www.benfranklinplumbing.com)

**At Benjamin Franklin Plumbing®**  
**We Offer the Following Services:**

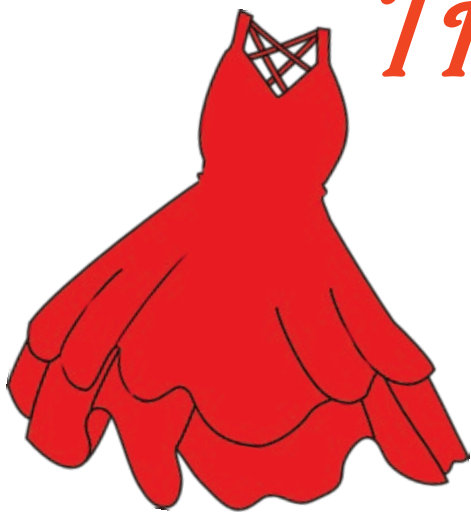
- ☒ Plumbing Repairs
- ☒ Drain Cleaning
- ☒ Water Heater
- ☒ Water Softener
- ☒ Toilets, Sinks, Faucets, Tubs
- ☒ Sump Pump and Emergency Backups
- ☒ Water and Drain Line Repairs
- ☒ Frozen Pipes



©2014 Clockwork IP, LLC

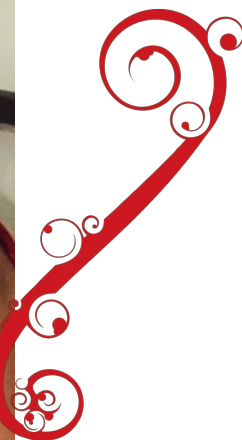
**Drug Tested, Background-Checked Employees • Straightforward Pricing® • Fully Licensed and Insured**



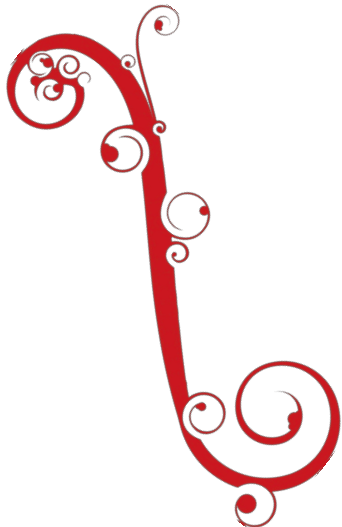


# THE RED PARTY

We would like to thank everyone for making our first annual Red Party a great success! The bond between our members last a lifetime; this bond was seen at the Red Party when Provisional, Active and Sustaining members gathered to reminisce over past events, discuss future aspirations, and pat ourselves on the back for all of our philanthropic accomplishments. Due to our hard work and determination, our organization positively influences the community beyond recognition. We are so proud of our members, and hope even if you were unable to attend the Red Party you take a moment to recognize your efforts. Thank you for all that you do.









## JUNIOR LEAGUE OF WILMINGTON, DE

*Women building better communities*

1801 N. Market St.  
Wilmington, DE 19802  
[www.jlwilmington.org](http://www.jlwilmington.org)

Non-Profit Organization  
U.S. POSTAGE  
PAID  
Wilmington, Delaware  
PERMIT NO. 227

Follow the NEW JLW Blog!  
[jlwilmington.wordpress.com](http://jlwilmington.wordpress.com)

facebook

Pinterest

twitter

Find the Junior League of  
Wilmington on your favorite  
social media outlet and like us, fol-  
low us, and share us!

## *Join The Junior League!*

The Junior League of Wilmington invites new members to join us. The JLW has new-member classes starting in January 2016 and June 2016.

Please visit our website at  
[www.jlwilmington.org](http://www.jlwilmington.org) to learn about  
recruitment events and membership.

